

**RPL18A Antibody (C-term)**  
**Affinity Purified Rabbit Polyclonal Antibody (Pab)**  
**Catalog # AP9141b****Specification**

---

**RPL18A Antibody (C-term) - Product Information**

Application	FC, IHC-P, WB,E
Primary Accession	<a href="#">Q02543</a>
Other Accession	<a href="#">P62718</a> , <a href="#">P62717</a> , <a href="#">Q7ZMJ4</a> , <a href="#">Q3T003</a> , <a href="#">G1TTY7</a>
Reactivity	Human, Mouse
Predicted	Bovine, Zebrafish, Rabbit, Rat
Host	Rabbit
Clonality	Polyclonal
Isotype	Rabbit IgG
Antigen Region	140-166

**RPL18A Antibody (C-term) - Additional Information****Gene ID** 6142**Other Names**

60S ribosomal protein L18a, RPL18A

**Target/Specificity**

This RPL18A antibody is generated from rabbits immunized with a KLH conjugated synthetic peptide between 140-166 amino acids from the C-terminal region of human RPL18A.

**Dilution**

FC~~1:10~50

IHC-P~~1:50~100

WB~~1:1000

E~~Use at an assay dependent concentration.

**Format**

Purified polyclonal antibody supplied in PBS with 0.09% (W/V) sodium azide. This antibody is purified through a protein A column, followed by peptide affinity purification.

**Storage**

Maintain refrigerated at 2-8°C for up to 2 weeks. For long term storage store at -20°C in small aliquots to prevent freeze-thaw cycles.

**Precautions**

RPL18A Antibody (C-term) is for research use only and not for use in diagnostic or therapeutic procedures.

**RPL18A Antibody (C-term) - Protein Information****Name** RPL18A

**Function** Component of the large ribosomal subunit. The ribosome is a large ribonucleoprotein complex responsible for the synthesis of proteins in the cell.

**Cellular Location**

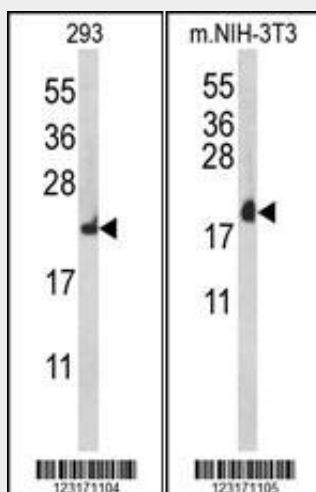
Cytoplasm.

**RPL18A Antibody (C-term) - Protocols**

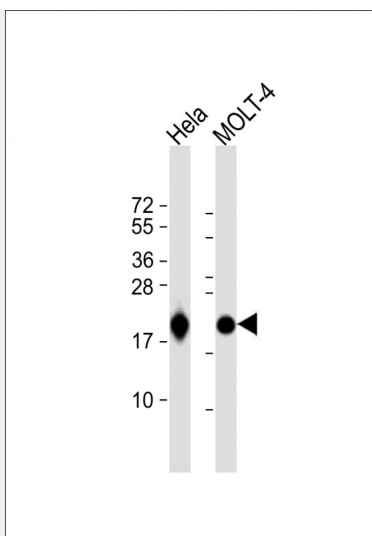
Provided below are standard protocols that you may find useful for product applications.

- [Western Blot](#)
- [Blocking Peptides](#)
- [Dot Blot](#)
- [Immunohistochemistry](#)
- [Immunofluorescence](#)
- [Immunoprecipitation](#)
- [Flow Cytometry](#)
- [Cell Culture](#)

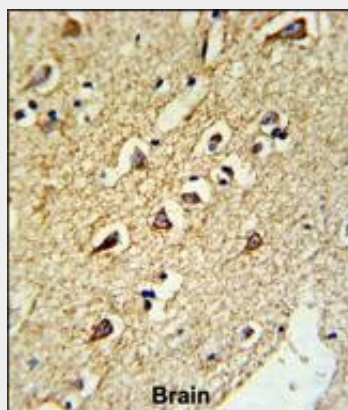
**RPL18A Antibody (C-term) - Images**



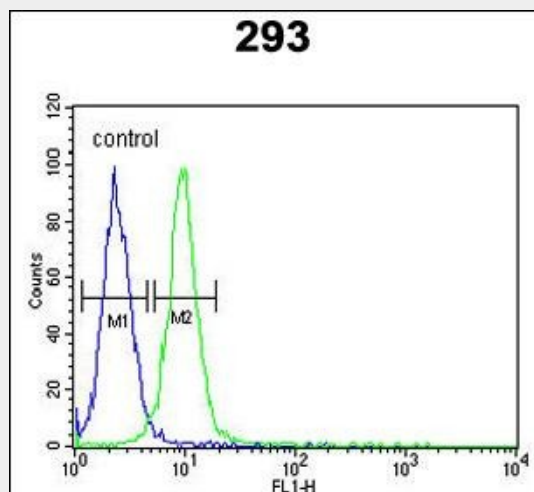
Western blot analysis of RPL18A Antibody (C-term) (Cat. #AP9141b) in 293, mouse NIH-3T3 cell line lysates (35ug/lane). RPL18A (arrow) was detected using the purified Pab.



All lanes : Anti-RPL18A Antibody (C-term) at 1:1000 dilution Lane 1: HeLa whole cell lysate Lane 2: MOLT-4 whole cell lysate Lysates/proteins at 20  $\mu$ g per lane. Secondary Goat Anti-Rabbit IgG, (H+L), Peroxidase conjugated at 1/10000 dilution. Predicted band size : 21 kDa Blocking/Dilution buffer: 5% NFDM/TBST.



Formalin-fixed and paraffin-embedded human brain tissue reacted with RPL18A Antibody (C-term), which was peroxidase-conjugated to the secondary antibody, followed by DAB staining. This data demonstrates the use of this antibody for immunohistochemistry; clinical relevance has not been evaluated.



RPL18A Antibody (C-term) (Cat. #AP9141b) flow cytometric analysis of 293 cells (right histogram)

compared to a negative control cell (left histogram).FITC-conjugated goat-anti-rabbit secondary antibodies were used for the analysis.

#### **RPL18A Antibody (C-term) - Background**

Ribosomes, the organelles that catalyze protein synthesis, consist of a small 40S subunit and a large 60S subunit. Together these subunits are composed of 4 RNA species and approximately 80 structurally distinct proteins. RPL18A is a ribosomal protein that is a component of the 60S subunit. The protein belongs to the L18AE family of ribosomal proteins. It is located in the cytoplasm.

#### **RPL18A Antibody (C-term) - References**

Wool,I.G., et.al., Biochem. Cell Biol. 73 (11-12), 933-947 (1995)